

# ARMY CORPS OF ENGINEERS

*June 21, 2012*

*Kat Maybury & Paul Wagner*



**NatureServe**

A Network Connecting Science With Conservation

# Who We Are & What We Do



## **Our mission**

- To provide the scientific basis for effective conservation action

## **Our Network**

- More than 80 biodiversity information centers throughout the U.S., Canada, and Latin America

# Science-Based, Results-Oriented

Scientific Knowledge



Network Capacity



Impact Decisions



Reduced Threat



Biodiversity Conservation



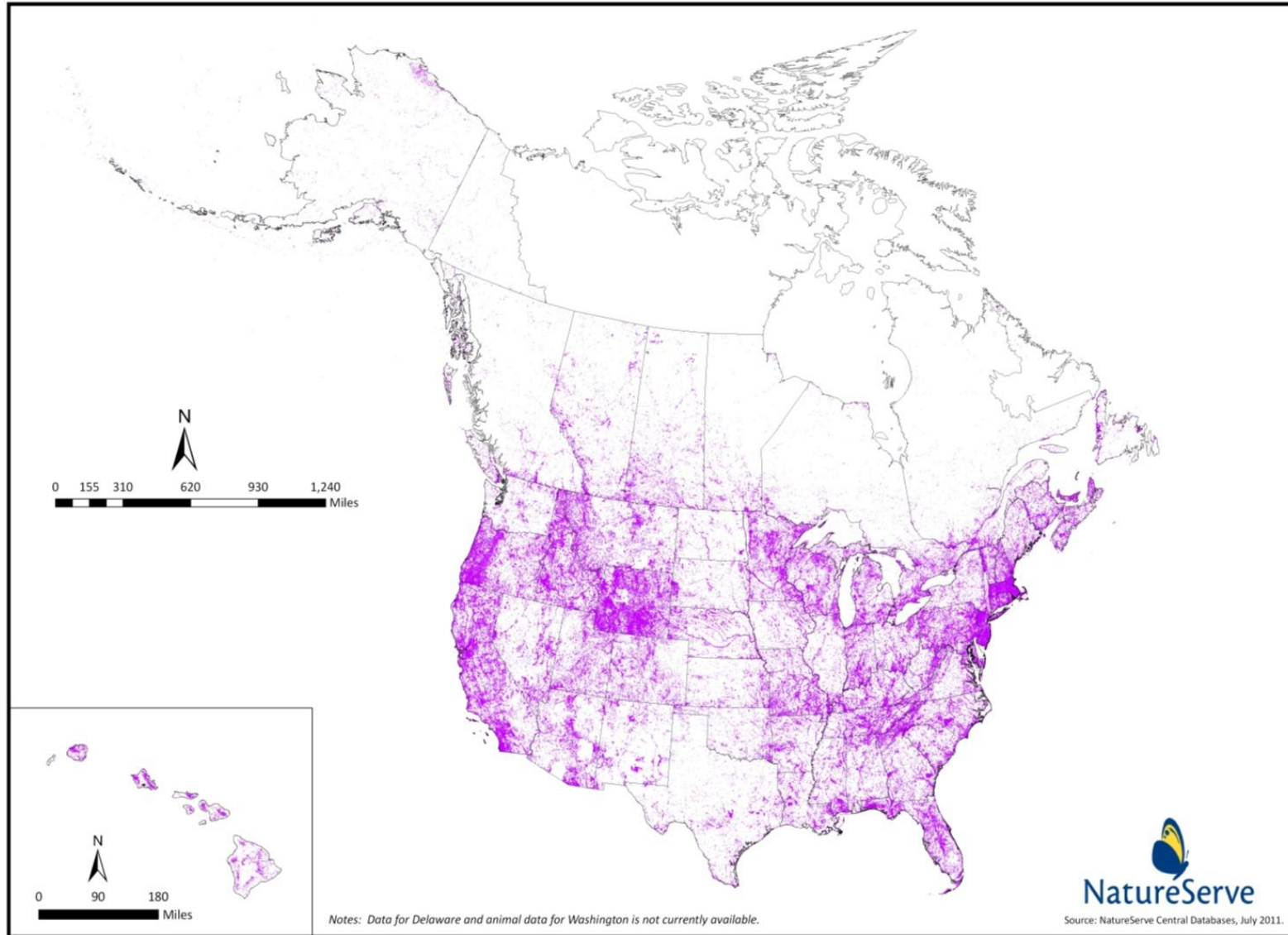
# The Questions We Ask—and Answer

- What species and habitats exist?
- Where are they found?
- How are they doing?
- Which are priorities for management or protection?
- What do they need to sustain them?



*Piedmont Fame-flower (G1) Critically Imperiled © Gary Fleming*

# Detailed Species Data



# Tools for Science-Based Decision-Making



# INTRODUCING







# NatureServe SURVEYOR

## Nationwide Screening for At-Risk Species

Signed in as  
[Registered User]  
[My Account](#)  
[Sign out](#)

[My Surveyor](#)

[Get Started](#)

[Pricing & Terms](#)

[About the Data](#)

[User Guide](#)

[NatureServe](#)

[Basemap](#) [Overview Map](#) [Identify](#) [Measure](#)

Find address or place

